



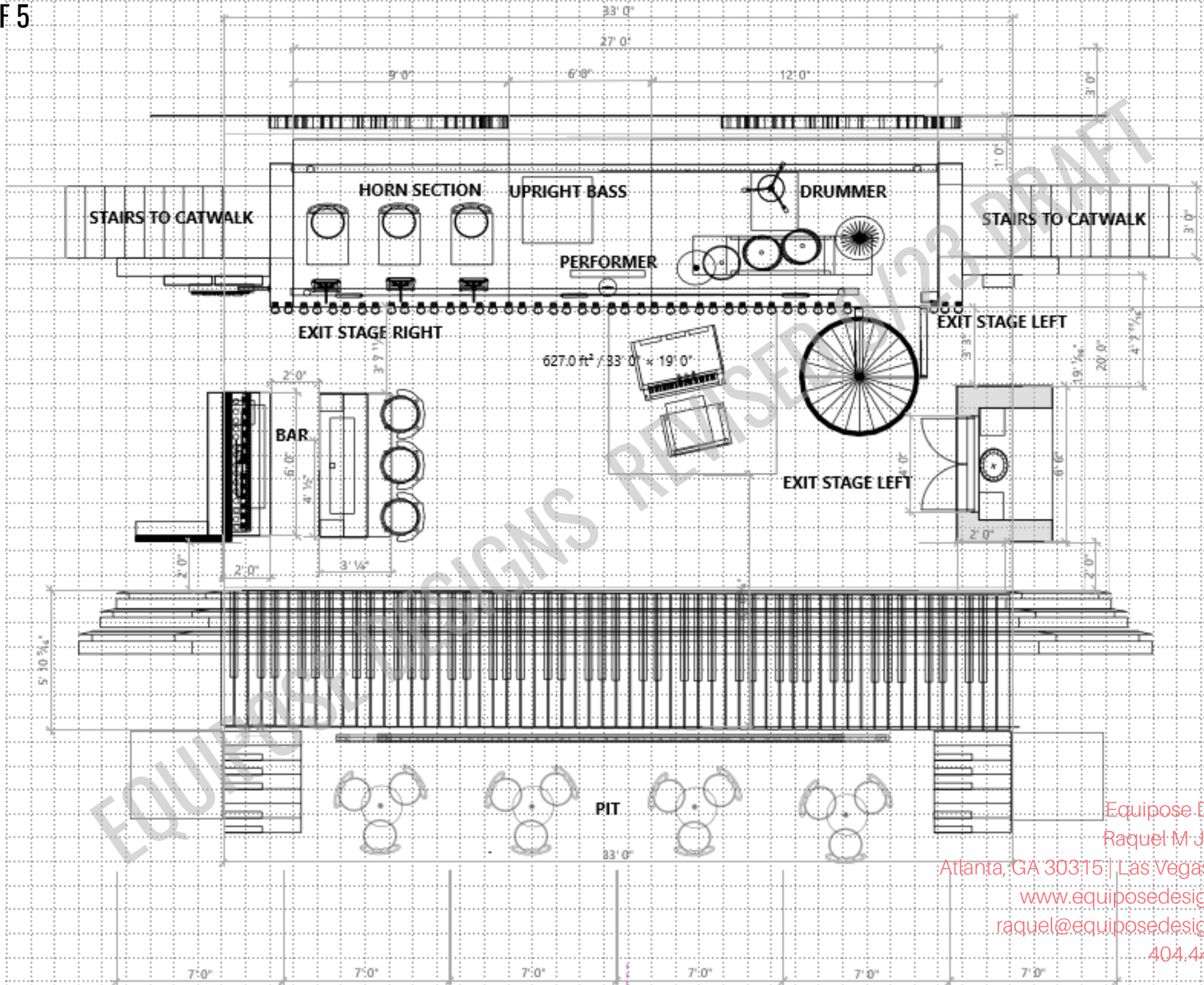
AIN'T MISBEHAVIN

FOR A GEORGIA ENSEMBLE THEATRE PRODUCTION EYES ONLY

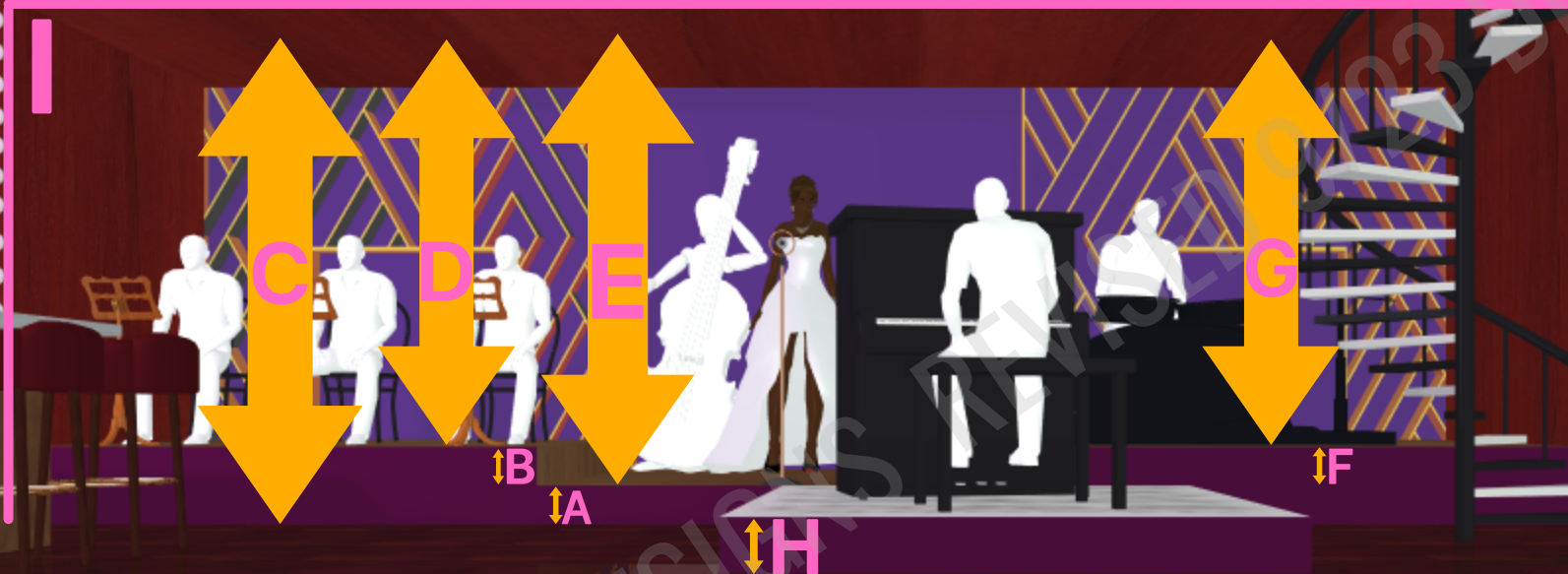
CONFIDENTIALITY NOTICE: The contents of this email message and any attachments are intended solely for the addressee(s) and may contain confidential and/or privileged information and may be legally protected from disclosure. If you are not the intended recipient of this message or their agent, or if this message has been addressed to you in error, please immediately alert the sender by reply email and then delete this message and any attachments. If you are not the intended recipient, you are hereby notified that any use, dissemination, copying, or storage of this message or its attachments is strictly prohibited.

EQUIPOSE DESIGNS REVISSED 9/23 DRAFT

Equipose Designs
Raquel M Jackson
Atlanta, GA 30315 | Las Vegas 89178
www.equiposedesigns.com
raquel@equiposedesigns.com
404.447.0292



Equipose Designs
Raquel M Jackson
Atlanta, GA 30315 | Las Vegas 89178
www.equiposedesigns.com
raquel@equiposedesigns.com
404.447.0292



REF.	NAME	DESCRIPTION
A.	level 1 stage platform	1 sec. @ 27'0" Width x 0'8" Height x 0'7" x Depth
B.	Horn section riser	2 sec. @ 9'0" Width x 0'8" Height x 0'7" x Depth
C.	Floor to ceiling	9'0" Height
D.	Horn section height	7'8" Height
E.	Upright bass/ singer	8'4" Height
F.	Drummer platform section	@ 12'0" Width x Height 0'8" x 7'0" x Depth
G.	Drummer platform height	7'8" Height
H.	Piano platform	7'0" Width x 0'8" Height x 7'0" x Depth
I.	Hyperrectangle	29'0" Width x 0'8" Height x 6'0" x Depth

Equipose Designs
 Raquel M Jackson
 Atlanta, GA 30315 | Las Vegas 89178
www.equiposedesigns.com
raquel@equiposedesigns.com
 404.447.0292



EQUIPOSE DESIGNS RELEASED 9/23 DRAFT

Equipose Designs
Raquel M. Jackson
Atlanta, GA 30315 | Las Vegas 89178
www.equiposedesigns.com
raquel@equiposedesigns.com
404.447.0292



Equipose Designs
Raquel M Jackson
Atlanta, GA 30315 | Las Vegas 89178
www.equiposedesigns.com
raquel@equiposedesigns.com
404.447.0292



Equipose Designs

Raquel M Jackson

Atlanta, GA 30315 | Las Vegas 89178

www.equiposedesigns.com

raquel@equiposedesigns.com

404.447.0292

SCENIC

The following images are for inspirational purposes and can be use as absolute with approval by set designer. Please use these images to inspire you while shopping for scenic and or set props.

PROPS



COLOR MOODBOARD

TEXTURE | SHINE | FINISH



Equipose Interior Designs
Raquel M Jackson
Atlanta, GA 30315 | Las Vegas 89178
www.equipoosedesigns.com
raquel@equipoosedesigns.com
404.447.0292







NEWS

SPEAKEASY'S
1920'S



INSIDER ATTENTION

1920'S INSPIRED BAR STOOLS



THE SIDEKICK EASY



1920's-1930's Eugene Vincent & Co. LIQUEUR Advertisement, Alcohol Bottles, Vintage Bar

PRINCIPALES SPÉCIALITÉS

<p>N° 1</p>  <p>LIQUEUR GALLIFET 43° LITRE 3/4 1/2 1/4</p>	<p>N° 2</p>  <p>FINE PRUNELLE AU COGNAC 42° LITRE 3/4 1/2</p>	<p>N° 3</p>  <p>CRÈME DE CACAO-CHOUVA 28° VANILLE, MOKA, THÉ, NOYAUX LITRE 3/4 1/2 3/4 1/4</p>	<p>N° 4</p>  <p>VINCENTINE 43° LITRE 3/4 1/2</p>
<p>N° 5</p>  <p>KUMMEL ECKAU 00 CRISTALLISÉ OU NON BOUT 0.65 1/2</p>	<p>N° 6</p>  <p>CURAÇAO BLANC OU ROUGE, 35 & 40° LITRE 3/4 1/2 1/4</p>	<p>N° 7</p>  <p>CURAÇAO BLANC OU ROUGE, 35 & 40° LITRE 3/4 1/2 1/4</p>	<p>N° 8</p>  <p>CHERRY BRANDY 32° MANDARINE BRANDY 30° PEACH, APRICOT BRANDY 32° LITRE 3/4 1/2</p>

PRINCIPALES SPÉCIALITÉS

<p>N° 9</p>  <p>FINE CHAMPAGNE 40° SÈVE DE FINE CHAMPAGNE 40° LITRE 3/4 1/2 3/4 1/4</p>	<p>N° 10</p>  <p>EAU DE VIE DE DANTZICK 38° LITRE 3/4 1/2</p>	<p>N° 11</p>  <p>MARASQUIN 27° 0.80 0.40</p>	<p>N° 12</p>  <p>RHUM DES MISSIONS 44° ET RHUM BLANC 44° LITRE 1/2</p>
<p>N° 13</p>  <p>MARC DE BOURGOONE 45° LITRE 3/4 1/2</p>	<p>N° 14</p>  <p>MENTHE BLANCHE 29° LITRE 3/4 1/2</p>	<p>N° 15</p>  <p>ANISETTE 25° LITRE 3/4 1/2</p>	<p>N° 16</p>  <p>LIQUEURS SURFINES 30° HABILLAGE TYPE LITRE 1/2</p>



PRELPS

 [CLICKABLE LINKS](#)

1920'S LIGHT



ART DECO LIGHTING 1920'S

 [CLICKABLE LINKS](#)

inches by fig. 138. This permits utmost flexibility in getting desired results by use of proper lenses.
To cover the range of projection there are different lengths of boods. The standard 16-inch is most commonly used. For distance from 75 ft. to 150 ft. the 20-in. hood is recommended.

Eight-inch lenses are provided with and held in place by a wire mesh guard which tends to equalize temperature and acts as a safeguard.

Standard Nitrogen Gas Light is mounted on telescopic stand having range from 4 to 7 ft. (unless otherwise specified), and furnished with 25 ft. flexible stage cable and connector. Following handle will be provided when specified (\$1.00 extra).

Fig. No.	Lens	Length of Hood	Type—Watts	Price
528	8 inches	20 inches	1000-2000	158.00
525	8 inches	16 inches	1000-2000	55.00
487	8 inches	16 inches	500-1000	45.00
526	6 inches	20 inches	1000-2000	42.00
501	6 inches	16 inches	1000-2000	48.00
490	6 inches	16 inches	500-1000	35.00

Spotlights as described fitted with patented clamp hanger, 60 ft. stage cable and connector. Deduct \$20 from above prices.

SQUARE BALCONY SPOT LIGHT

Designed for mounting on balcony. Takes 1000-watt G-40 lamp, accessible thru doors in top. Burner is same as in No. 600 spotlight.



Fig. No. 540

Fig. No. 540—6-in. 500-1000 watt type spot light with spherical reflector complete on telescoping stand having range from 4 to 7 ft.; fitted with 12-amp. connector and 25 ft. stage cable. Prices do not include lamp.

Fig. No. 536—6-in. 1000-1500 watt type spot light with spherical reflector complete with adjustable pipe clamp, 60 ft. stage cable and 12-amp. full connector. \$114.00

Fig. No. 535—8-inch 1000-1500-2000 watt type spot light with spherical reflector complete on telescoping stand having range from 4 to 7 ft.; fitted with 12-amp. connector and 25 ft. stage cable. \$125.00

Fig. No. 537—8-inch 1000-1500-2000 watt type spot light with spherical reflector complete with adjustable pipe clamp, 60 ft. stage cable and 12-amp. full connector. \$144.00



Fig. No. 541

STANDARD "MAZDA" SPOT LIGHTS (8-inch lens type)



Fig. No. 534
(Prices do not include lamp or dimmers.)

Fig. No. 532—8-inch 1000-1500-2000 watt type spot light with spherical reflector complete on telescoping stand having range from 4 to 7 ft.; fitted with 12-amp. connector and 25 ft. stage cable. \$55.00
Fig. No. 533—8-inch 1000-1500-2000 watt type spot light with spherical reflector complete with adjustable pipe clamp, 60 ft. stage cable and 12-amp. full connector. \$144.00



Fig. No. 535

Fig. No. 487—8-inch 500-1000 watt type spot light with spherical reflector, complete on telescopic stand, having range from 4 to 7 ft., and fitted with 12 ft. stage cable and 12-amp. connector. \$13.00
Dimmer for above. \$14.20

Fig. No. 488—8-inch 500-1000 watt type spot light with spherical reflector, complete with adjustable pipe clamp, 60 ft. stage cable and 12-amp. full connector. \$14.00

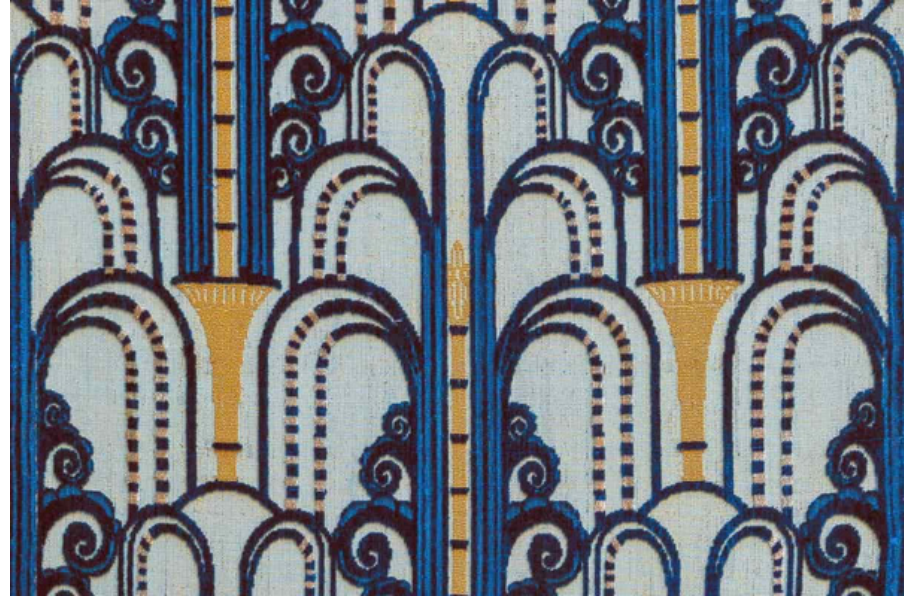


PROPS
SET
BUILT



The Waldorf-Astoria - Park Avenue Foyer - Murals by Louis Rigal.

Geometric elements are a recurring decoration, much loved by artists such as Eugène Grasset who stated that various simple geometric shapes like triangles and squares are the basis of all compositional arrangements. A perfect example of this principle is the Mir soprarizzo velvet. Among favorite motifs, there are the zig-zag ones, which suggest the idea of movement, such as the Zig Zag Velvet.



Egyptian art, in vogue at the beginning of the 20th century thanks to important archaeological discoveries, influences the Art Deco decorative motifs. The elegant stylized palm leaves of the Palmyra velvet are an example.



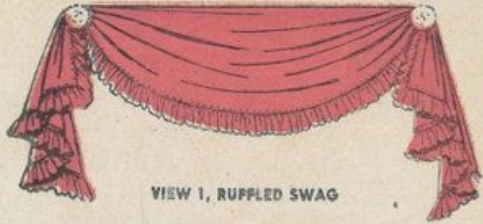
CLICKABLE LINKS

25c

ADVANCE

DECORATOR SERIES

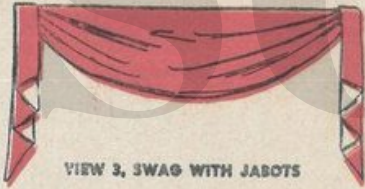
7513



VIEW 1, RUFFLED SWAG



VIEW 2, PLEATED SWAG



VIEW 3, SWAG WITH JABOTS



VIEW 4, DRAPED SWAG WITH TIE-BACKS

As Featured in

MADemoiselle

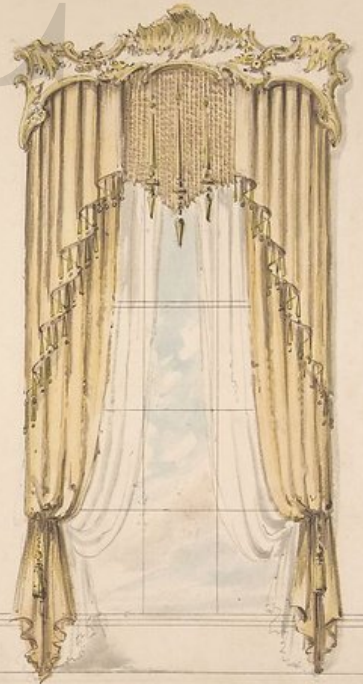
DRAWING ROOM - WINDOW CURTAINS



ORNAMENT AT A

ORNAMENT AT B

ORNAMENT AT C



THE WALDORF-ASTORIA



The WALDORF ASTORIA



49TH TO 50TH STREETS • NEW YORK

Lucius Boomer, *President*
Frank A. Ready, *Manager*

Telephone: ELdorado 5-3000 Cable Address: Waldorf, New York



Battery Place and Skyline of Lower New York City.

PAIR OF ANTIQUE AUSTRIAN 1930'S J&J KOHN &
MUNDUS LARGER BENTWOOD DINING CHAIRS



THE OPS

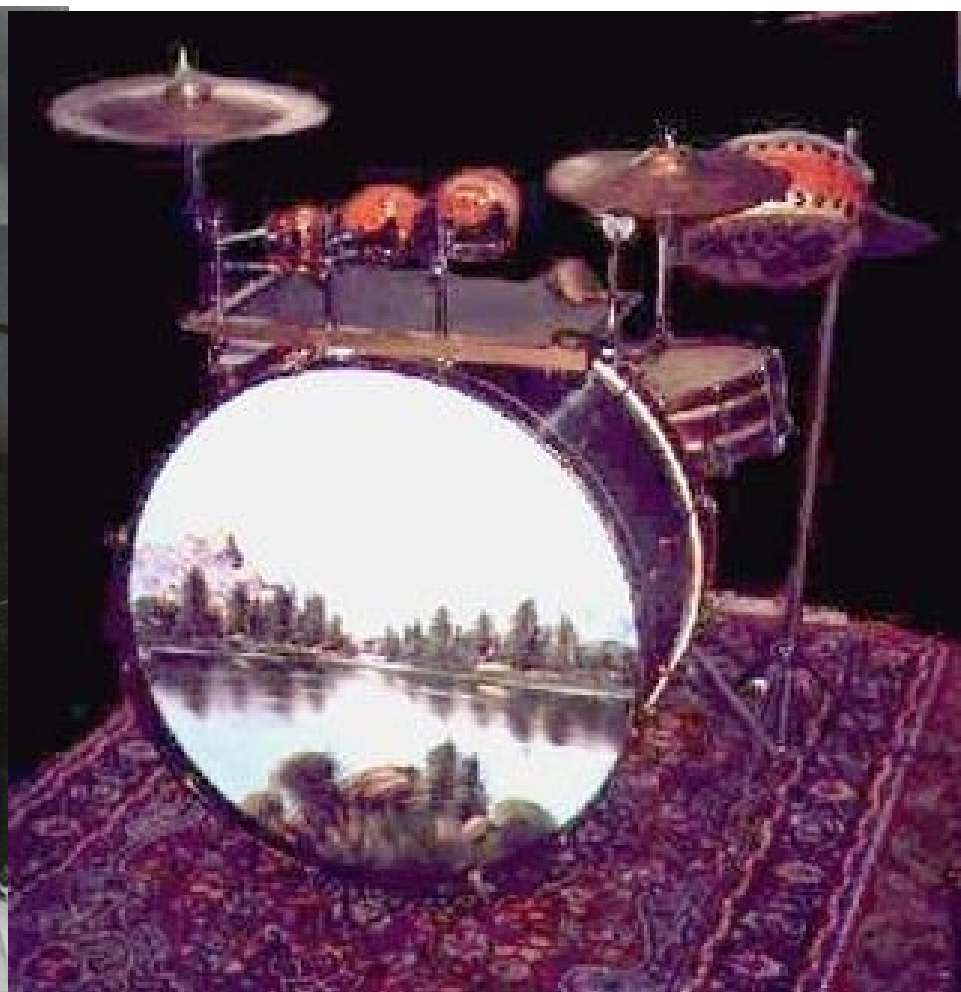


PROPS



A handsome drum set, from 1924

INSPIRATION



 [CLICKABLE LINKS](#)



YOU CAN FIND MORE OF
THESE ON OFFERUP

PROPS

 CLICKABLE LINKS

19TH CENTURY MUSIC STANDS



CLICKABLE LINKS

MUSICAL HORNS (REAL INSTRUMENTS) AS PROPS
RESTING ON TOP OF BAR DOES NOT HAVE TO BE A
WORKING INSTRUMENT.

